



Personalized Dashboards with DI360^o

Simplify Analytics at a glance. New, in the next version release of software we are excited to introduce the **DI360 Module**. In the next customer upgrade to your Biologics DImax system, users now have access to custom dashboard functionality with DI360. DI360 empowers users with the ability to create personalized dashboards of content relevant analysis needed all at a glance.

DI360 Dashboard configurator leverages its industry leading real-time analytics. All KPI's or department metrics have the ability to be mapped and displayed in a user centric manner. A User may drag in the display style type they wish to view their data as, apply the performance metric the want to study and size it to suit their needs.

DI360 allows users to define their own individual dashboards through the use of multiple data display options and metrics

relevant to their department or reporting standards.

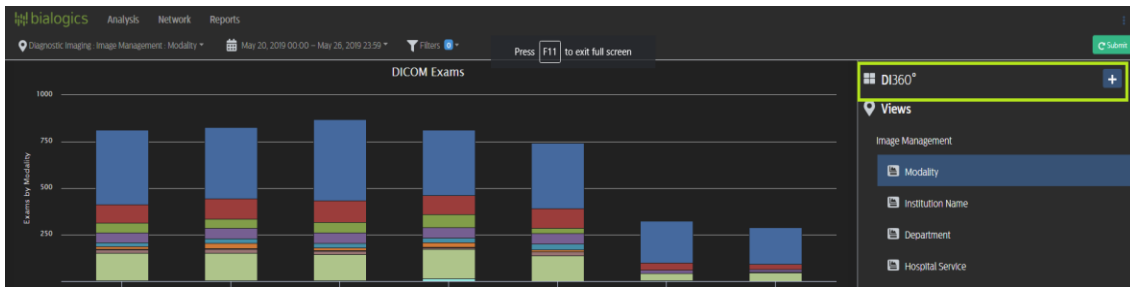
Users have the ability to create as many personalized Dashboards as required. Once a dashboard is saved, functionality permits the option to default to their new view upon login instead of the traditional login screen of the most recent 24-hours modality report.

In addition to the launch of DI360 module, the latest version offers enhanced backend support improving system performance and processing speed on incoming messages. These performance improvements have equated to a rough improvement of 73% in processing power allowing larger queries to be handled in less time than previous version. Additionally, bug fixes have been addressed in order to solve outstanding problems with the previous update.

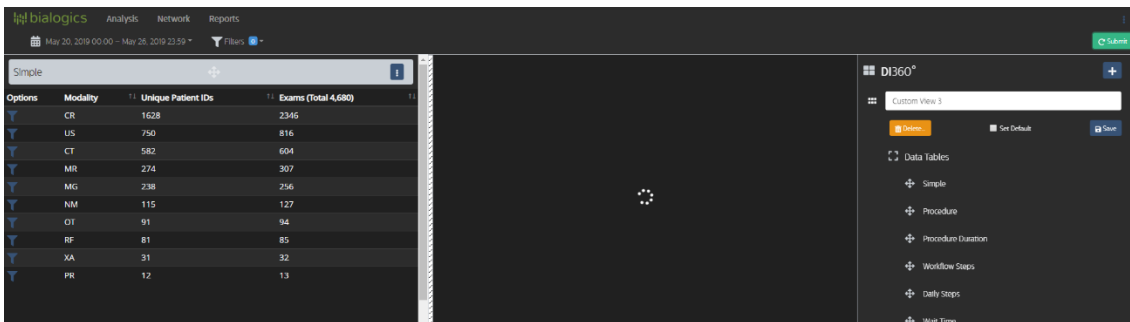


Getting started with DI 360

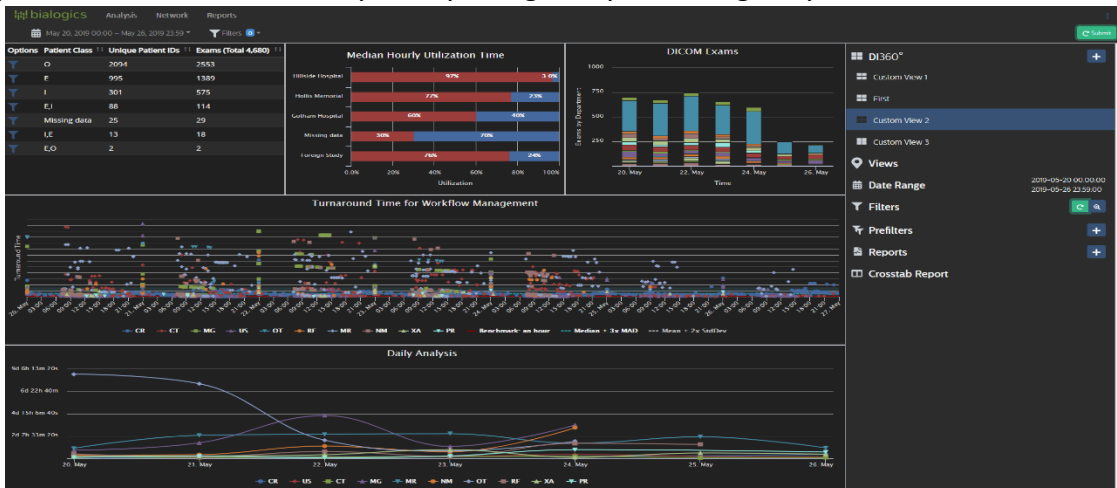
Getting started with DI 360 is as easy as, one two, three. First click on the DI 360 tab of your Biologics system,



Upon creating a new custom view by pressing the “+” button, you are presented with two options, data fields or data graphs. Drag your desired data display types onto your dashboard. In this example we have dragged in a simple chart from “Data Charts” to the top left section of our dashboard. Once displayed we can choose a metric we wish to pivot by. In our Table we have opted to show modality volumes



Once all the display styles have been set simply click save, your newly created dashboard has been saved and can be accessed at anytime. In addition, your new dashboard can now be set as your default screen for every time you log into your Biologics system



Book a Demonstration

Interested in learning more about how to maximize your experience with DI 360? Send us an email at avachon@biologics.com to book a meeting time where we will explain the fine tunings of the system

